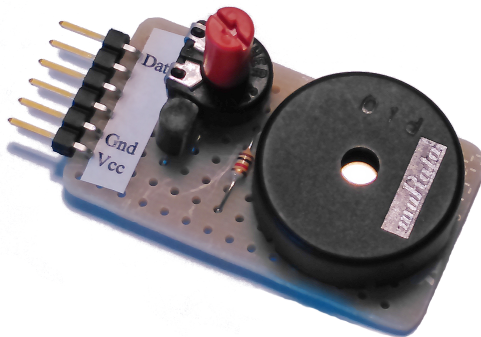


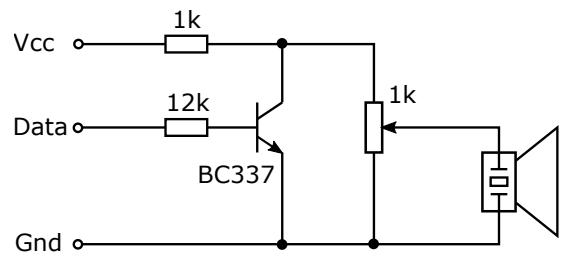
PmodPiezo Reference Manual

Overview

The PmodPiezo is a simple mono piezo element with adjustable volume, for producing tones.



The PmodPiezo



Schematic

Functional description

The PmodPiezo utilizes only one signal, *data*, in the pmod interface to control the piezo element. To produce tones of a certain frequency in the piezo element, the *data* signal must alternate between high and low with that same frequency. For silence simply set the *data* signal to a low state.

Interfacing with the Pmod

The PmodPiezo communicates with the host board via the GPIO protocol. The pmod can be attached to any of the GPIO headers JA1, JB1, JC1 or JD1 on the Nexys3 board. The *data* signal can be accessed at pin 7 (using lower row) or pin 1 (using higher row) on the header in use.