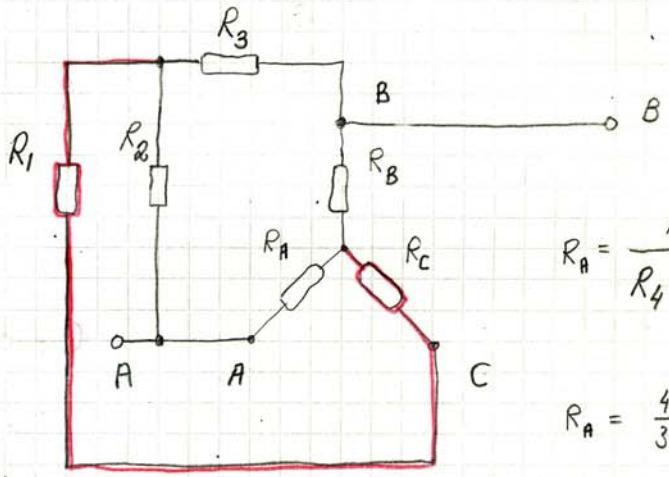
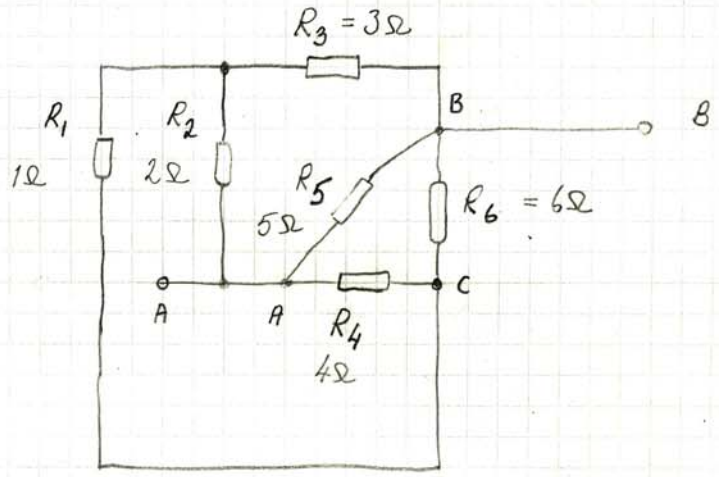


A4.2

BERAKWA RAB

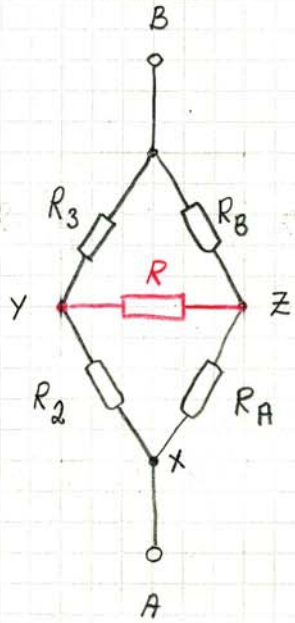


$$R_A = \frac{R_4 \cdot R_5}{R_4 + R_5 + R_6}$$

$$R_A = \frac{4}{3} \Omega \approx 1,33 \Omega$$

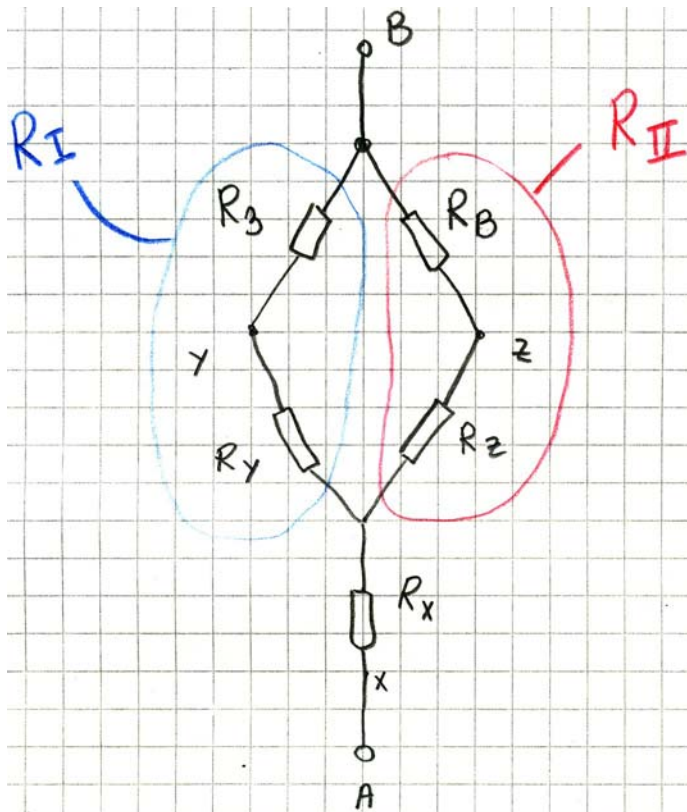
$$R_B = 2 \Omega$$

$$R_C = 1,6 \Omega$$



$$R = R_1 + R_C$$

$$R = 2,6 \Omega$$



$$R_x = \frac{R_1 R_2}{R_1 + R_2 + R_3}$$

$$R_x \approx 0.45 \Omega$$

$$R_y \approx 0.88 \Omega$$

$$R_z \approx 0.58 \Omega$$

$$R_1 = 3.88 \Omega$$

$$R_2 = 2.58 \Omega$$

$$R_{AB} = R_x + R_I // R_{II}$$

$$R_{AB} = 0.45 + \frac{3.88 \cdot 2.58}{3.88 + 2.58} \Omega \approx 2 \Omega$$