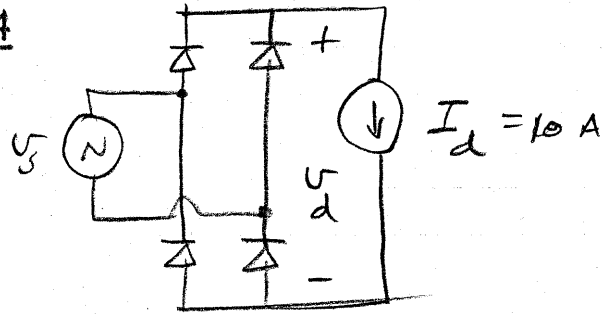


Problem 5-4

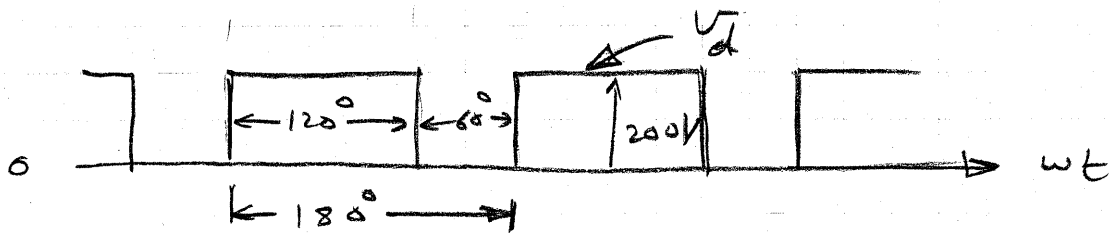
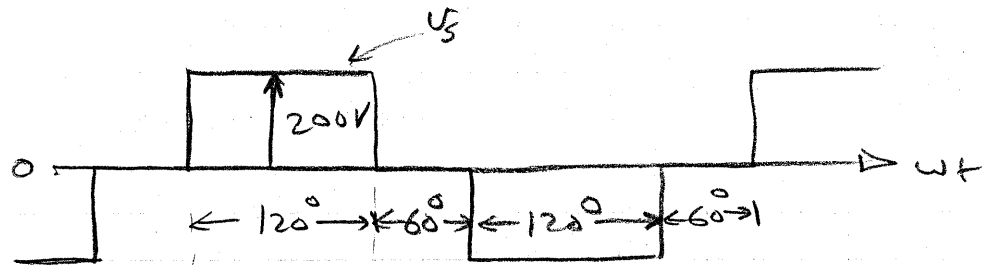


(a)  $v_s$ : sinusoidal,  $V_s = 120\text{ V}$   $\therefore V_d = 0.9V_s = 108\text{ V}$

$$P_d = V_d I_d = 1080\text{ W.}$$

5-5

⑥



$$V_d = \frac{(200 \times 120^\circ) + (0 \times 60^\circ)}{180^\circ} = 200 \times \frac{2}{3} = 133.33 V$$

$$P_d = V_d I_d = 1333.3 W$$